

Environmental Mitigation

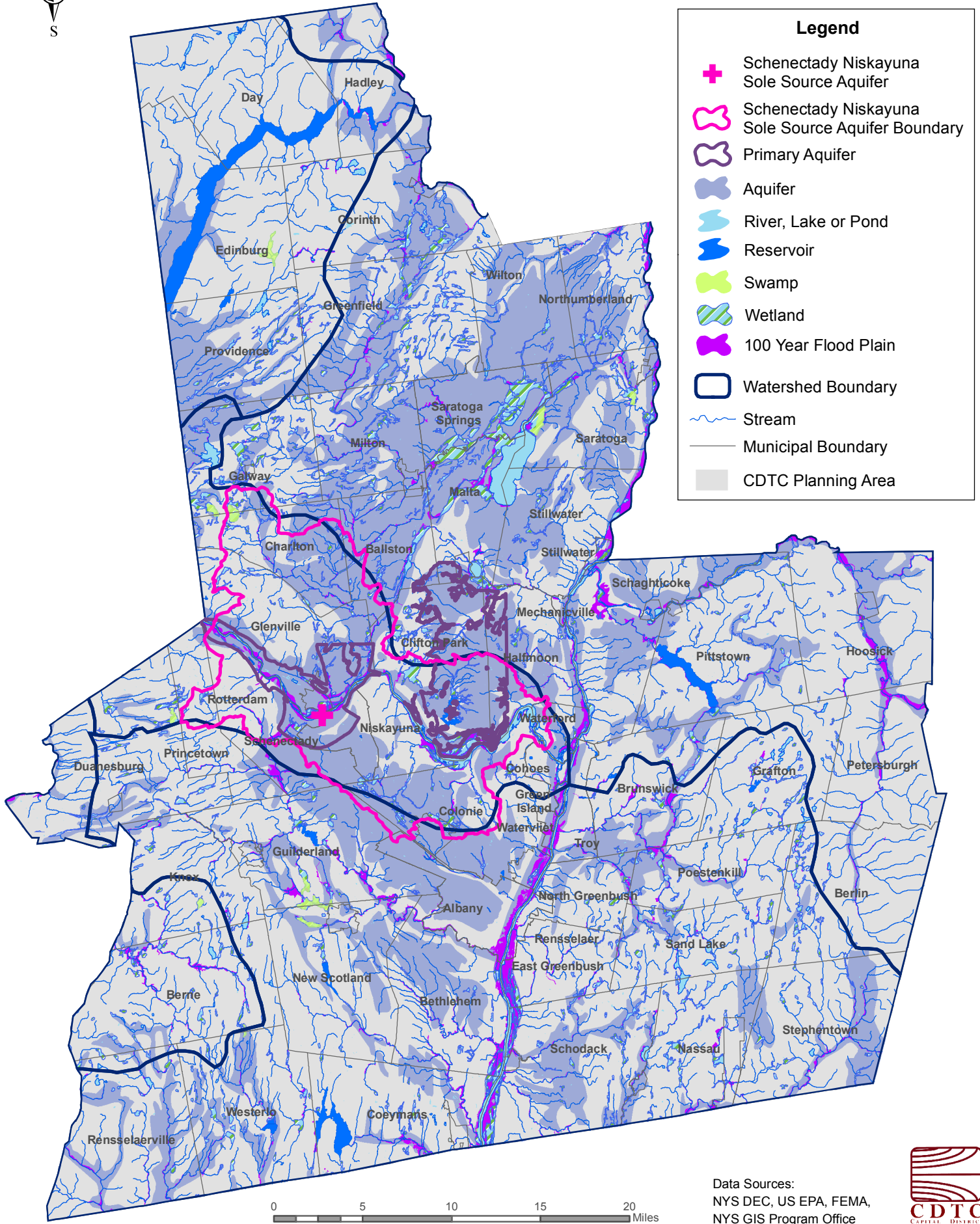
CDTC's New Visions regional transportation plan encourages smart growth as well as investment and development in urban areas as a method to protect natural resources. Smart growth policies also help to protect rural character and open space, and protect quality of life in the Capital Region. CDTC has undertaken a review of natural and cultural resource mapping, and for the development of the Regional Transportation Plan, CDTC consults with federal, state and local agencies on environmental issues as an important part of the environmental mitigation process, as required by the FAST Act. In addition, CDTC conducts scans of environmental systems related to candidate transportation projects for federal funds and documents the environmental systems present in the study areas for Linkage Program planning initiatives and other regional studies.

The following features are mapped at the project and regional level to screen for potential impacts:

- sole source aquifers
- aquifers
- reservoirs
- water features (streams, lakes, rivers)
- wetlands
- watersheds
- 100 year flood plains
- rare animal populations
- rare plant populations
- significant ecological sites
- significant ecological communities
- state historic sites
- national historic sites
- national historic register districts
- national historic register properties
- federal parks and lands
- state parks and forests
- state unique areas
- state wildlife management areas
- county forests and preserves
- municipal parks and lands
- land trust sites
- NYS DEC lands
- Adirondack Park
- agricultural districts
- NY Protected Lands
- natural community habitats
- rare plant habitats
- Class I & II soils

The five regional level maps of natural and cultural resources are included below:

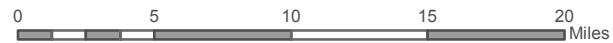
Environmental Mitigation Map 1: Hydrological Features



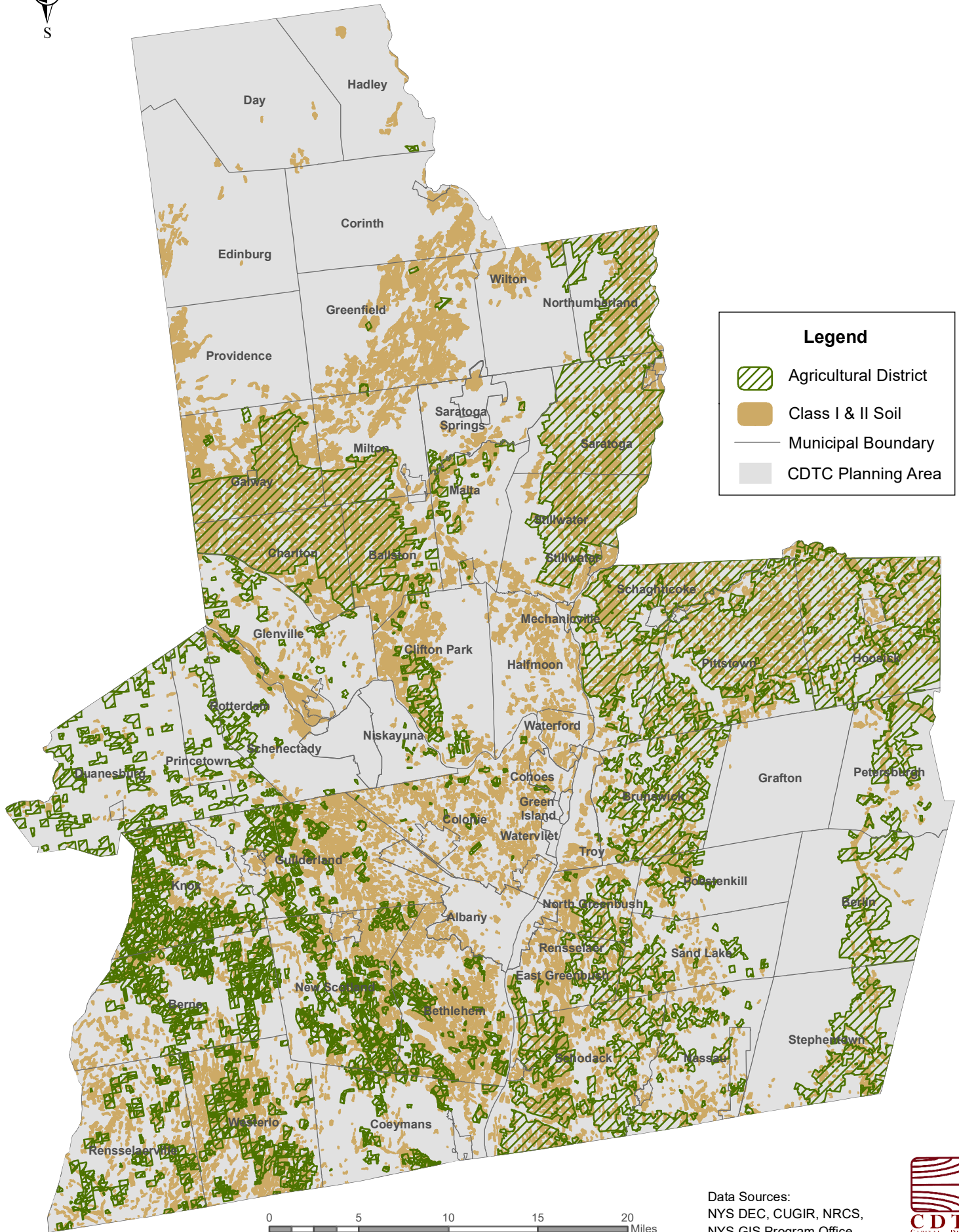
Legend

- + Schenectady Niskayuna Sole Source Aquifer
- Schenectady Niskayuna Sole Source Aquifer Boundary
- Primary Aquifer
- Aquifer
- River, Lake or Pond
- Reservoir
- Swamp
- Wetland
- 100 Year Flood Plain
- Watershed Boundary
- Stream
- Municipal Boundary
- CDTC Planning Area

Data Sources:
 NYS DEC, US EPA, FEMA,
 NYS GIS Program Office



Environmental Mitigation Map 2: Agricultural Areas



Legend

- Agricultural District
- Class I & II Soil
- Municipal Boundary
- CDTC Planning Area



Data Sources:
NYS DEC, CUGIR, NRCS,
NYS GIS Program Office



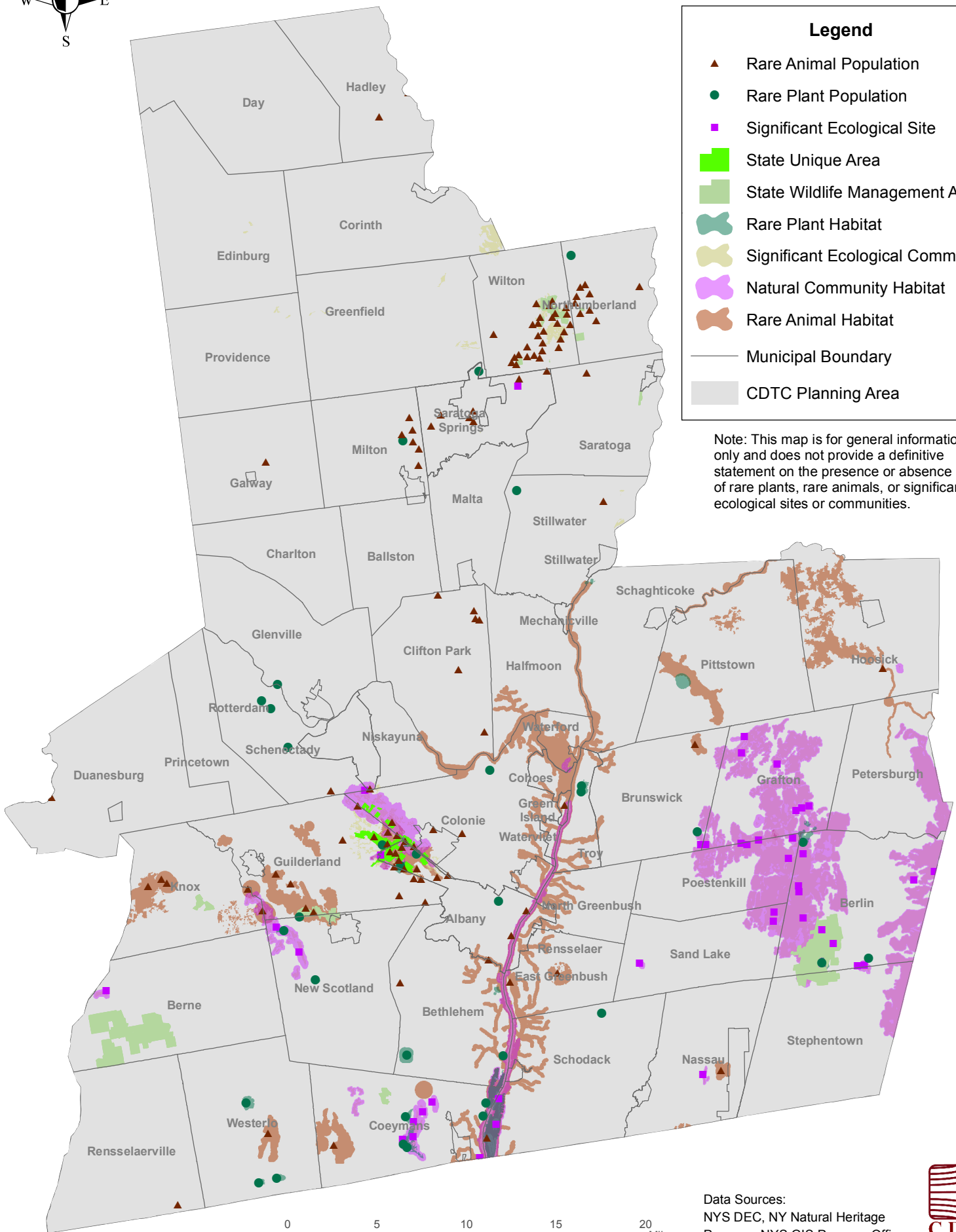
Environmental Mitigation Map 3: Natural Habitats



Legend

- ▲ Rare Animal Population
- Rare Plant Population
- Significant Ecological Site
- State Unique Area
- State Wildlife Management Area
- Rare Plant Habitat
- Significant Ecological Community
- Natural Community Habitat
- Rare Animal Habitat
- Municipal Boundary
- ▭ CDTC Planning Area

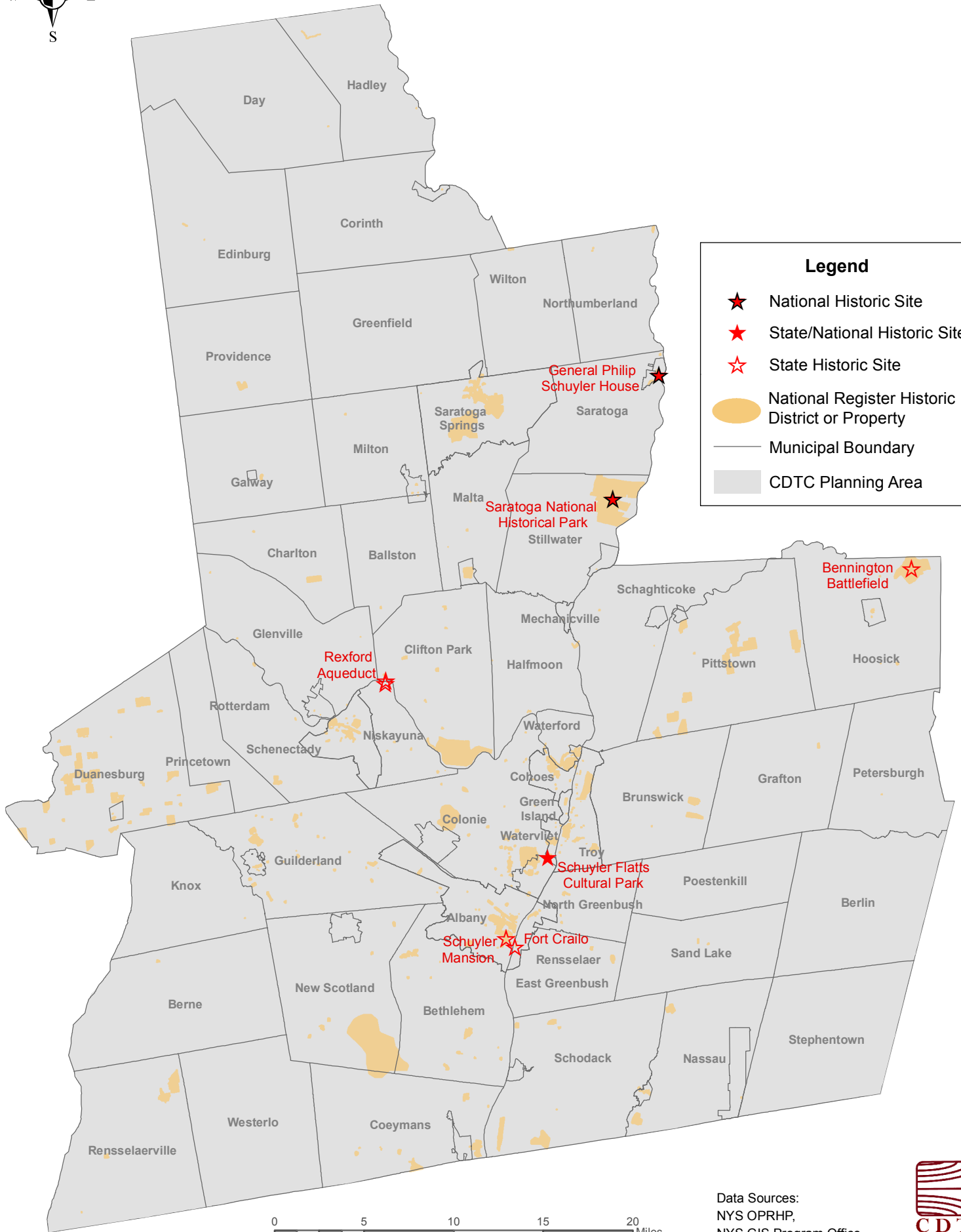
Note: This map is for general information only and does not provide a definitive statement on the presence or absence of rare plants, rare animals, or significant ecological sites or communities.



Data Sources:
 NYS DEC, NY Natural Heritage
 Program, NYS GIS Program Office



Environmental Mitigation Map 4: Historic Places



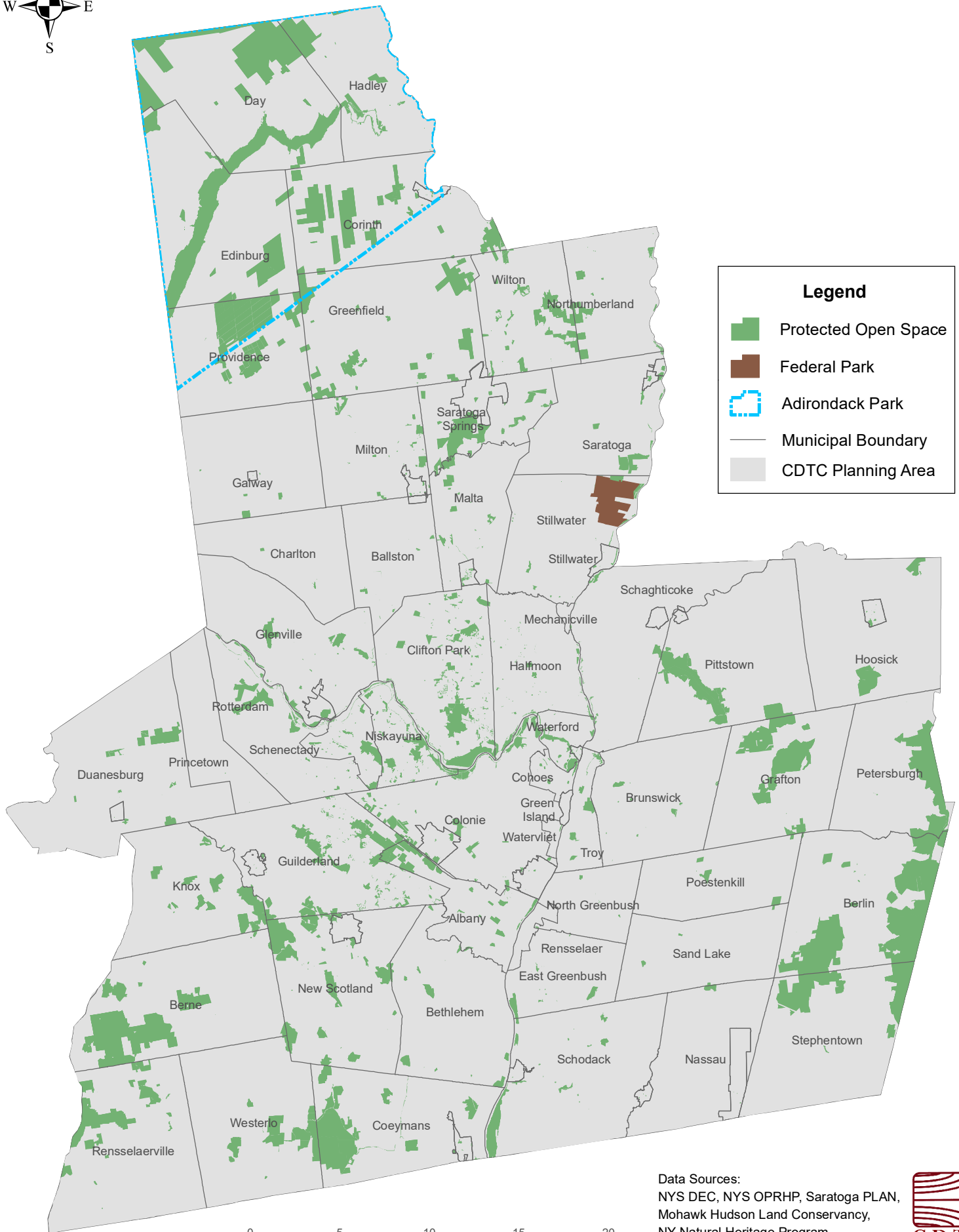
Legend

- ★ National Historic Site
- ★ State/National Historic Site
- ☆ State Historic Site
- National Register Historic District or Property
- Municipal Boundary
- CDTC Planning Area

Data Sources:
 NYS OPRHP,
 NYS GIS Program Office



Environmental Mitigation Map 5: Protected Open Space Areas



Legend

- Protected Open Space
- Federal Park
- Adirondack Park
- Municipal Boundary
- CDTC Planning Area

Data Sources:
 NYS DEC, NYS OPRHP, Saratoga PLAN,
 Mohawk Hudson Land Conservancy,
 NY Natural Heritage Program,
 NYS GIS Program Office

