



Task 4.21 FREIGHT ADVISORY COMMITTEE

Meeting Summary

Date: November 20, 2024

Start – End Time: 9:00 AM- 10:00AM Location: 1 Park

Place, Albany NY 12205 Facilitator: Chris Bauer

Name	Representing
Tom Phelan	BHX/Gannett Fleming
Pete Bardunias	Capital Region Chamber
Peter Comenzo	Town of Rotterdam
David Rosenberg	NYS DOT
Valerie Deane	NYS DOT Region 1
Louis Esposito	Town of Princetown/OOIDA
Mike Izdebski	Plug Power
Mark Landgraf	Interested Citizen
Ted Thompson	Interested Citizen
Catherine Lawson	University at Albany
Jeff Gritsavage	Canal Corporation
Ryan Riper	Town of Wilton
Dave Sawicz	Price Chopper/ Market 32
John Scavo	Town of Clifton Park
John Schneidawin	Port of Albany
Tony Vasil	AJ Vasil Associates
Jeff Wojtowicz	RPI
Emily Traiforos	GoRail
Stephen Feeney	Schenectady County
Kendra Hems	Trucking Association of New York
Chris Bauer	Capital Region Transportation Council
Ethan Townsend	Capital Region Transportation Council
Adam McCarvill	Capital Region Transportation Council

Agenda Items:

- 1) **Welcome and Introductions**

- 2) **Presentation – Pennsylvania Transportation Advisory Committee: E-Commerce Study (Tom Phelan, BHX Engineering)**

Tom Phelan of BHX Engineering provided an update on the ongoing E-Commerce Study being conducted by the Pennsylvania Transportation Advisory Committee. The purpose of the study is to identify the impacts of the growing e-commerce industry on land use, transportation, real estate values, and other areas.

Thus far, several outreach efforts have been conducted, including an online survey, an expert panel, and discussions with representatives from Colorado regarding delivery fees. The online survey revealed that while many regions lack specific plans to address the rise of e-commerce, a majority believe e-commerce will significantly impact transportation infrastructure and operations in their area. The expert panel, which included representatives from various public and private sector organizations (such as Amazon), identified key themes related to e-commerce. While technological advancements have streamlined processes, local transportation systems in the vicinity of e-commerce fulfillment centers still face disproportionate impacts from package deliveries even as regional traffic related to traditional retail trips may be reduced. The panel also emphasized the human aspect of e-commerce, noting that it is a customer-driven industry. While the economic benefits, such as employment, can boost local economies, distributors often face challenges staffing their facilities, particularly during peak seasons like the winter holidays.

The study is currently focused on case studies for understanding e-commerce's impact on local and regional transportation systems. This includes examining supply chains for e-commerce merchandise and the implications of direct customer interactions with e-commerce retailers in contrast with traditional brick-and-mortar stores. The analysis also highlights the differences between traditional distribution centers and e-commerce fulfillment centers, which significantly affect land use and economic outcomes for host municipalities.

3) Update - NYS Freight Transportation Plan (Chris Bauer, Capital Region Transportation Council & David Rosenberg, NYSDOT)

The New York State Freight Plan has been approved by the USDOT Office of the Secretary of Transportation without a lapse in NHFP funding and is now [available online](#). NYSDOT's Freight Web Atlas, an online tool, allows users to view the locations of various freight facilities (highways, rail lines, ports, etc.) and access statistics about their operations. The Web Atlas is accessible at <https://freightatlas.transportny.org>.

4) Update - Capital District Clean Communities (Adam McCarvill, Capital Region Transportation Council)

Adam McCarvill presented recent freight-related developments from the Long Island High Tech Incubator, including the ammonia-powered AMOGY tugboat and the Unique Electric Solutions commercial vehicle electric retrofit program. He noted that one of the largest challenges facing renewable energy and innovative technology in freight is that most of the leading-edge markets are not even built out yet, specifically lacking innovative incentive frameworks to both allow the companies to scale the solutions and foster market demand. Capital District Clean Communities recently participated in events such as Port Industry Day at the Port of Albany, a tour of the Sprague Energy Terminal, and a bus scrappage demonstration.

5) In Motion: 2050 Metropolitan Transportation Plan Update (Chris Bauer, Capital Region Transportation Council)

The Transportation Council is updating the Metropolitan Transportation Plan, In Motion: 2050. A scenario planning workshop was recently held to explore potential future development patterns in the Capital District and their impacts on the transportation system. More information is available at <https://www.inmotionplan.org>.

6) Update - Over-dimension Routing in the Capital Region Data Collection (Chris

Bauer, Capital Region Transportation Council)

Chris Bauer provided an update on the over-dimension routing project at the Transportation Council. Ongoing efforts aim to map problem areas in the Albany/Schenectady area that hinder over-size or over-weight cargo from taking specific routes. A more detailed planning project could be included in the Transportation Council's 2025-2026 Unified Planning Work Program, pending sponsorship and Policy Board approval, to allocate resources specifically for this routing effort.

7) Other Updates

The solicitation for projects for the 2025–2030 Transportation Improvement Program (TIP) is open. Project sponsors must submit new project applications by December 6.

The group discussed implementing the Truck Parking Study, particularly whether improvements are planned for truck parking near I-90 Exit 25A. The committee was unaware of any specific plans at this time.

Action Items:

Consider joining the Clean Communities mailing list: <http://eepurl.com/gZJwWz>.

2025 Meeting Dates:

Save the dates will be sent out for 2025 meeting dates by the end of the calendar year. 2025 meeting dates are currently anticipated to be:

- February 19
- May 21
- August 20
- November 19



1

Agenda

1) Welcome and Introductions

- In-person – sign-in sheet
- On Zoom – please put **Name, Organization** in Chat

- 2) Presentation - Pennsylvania Transportation Advisory Committee: E-Commerce Study (Tom Phelan, BHX Engineering)
- 3) Update – New York State Freight Transportation Plan (Capital Region Transportation Council, NYSDOT)
- 4) Update – Capital District Clean Communities (Adam McCarvill, Capital Region Transportation Council)
- 5) In Motion: 2050 Metropolitan Transportation Plan Update (Chris Bauer, Capital Region Transportation Council)
- 6) Update - Over-dimension Routing in the Capital Region Data Collection (Chris Bauer, Capital Region Transportation Council)
- 7) Member Updates
- 8) Action Items/2025 Meeting Dates
 - i. 2025 Meeting Dates: February 19, May 21, August 20, November 19

2



Pennsylvania
Transportation Advisory Committee

E-COMMERCE STUDY

Project Update

CAPITAL REGION FAC MEETING – NOVEMBER 20, 2024



1

Pennsylvania Transportation Advisory Committee (TAC): Background



2

State transportation commission

- PA Act 120 of 1970 established the State Transportation Commission (STC)
- The STC functions as PennDOT's Board of Directors; approves 12-Year Program (TYP)
- STC Purpose and Mission: **To evaluate the state and performance of Pennsylvania's transportation system and assess the resources required to maintain, improve, and expand transportation facilities.**
- STC includes 13 members
 - Secretary of Transportation
 - ex officio members from the PA Senate and House (2)
 - board member of a major transportation authority
 - representatives of Philadelphia and Allegheny (Pittsburgh) Counties
 - other appointees of the Governor of Pennsylvania

5



3

Transportation advisory committee

- Act 120 also established the State Transportation Advisory Committee (TAC)
- TAC Purpose and Mission:
 - **Consult and advise the STC and the Secretary of Transportation on all transportation modes**
 - **Serve as a connection between PennDOT and the general public**
- TAC role in the planning process:
 - Spread awareness about the transportation planning, programming, and goals of PennDOT and the STC
 - Conduct in-depth studies on key issues to inform the planning process.
- TAC generally meets on a quarterly basis in open public meetings.

6



4

E-Commerce Study: Project Overview



5

OBJECTIVES AND OUTCOMES

- Identify land use changes related to growth of e-commerce, transformation of retail establishments resulting from changes in landscape and demographics.
- Evaluate economic impact of these changes in terms of employment, real estate valuations, traffic and congestion, pedestrian and active transportation user safety, and other “last-mile” considerations.
- Identify how these trends impact PA’s transportation network and implications for future infrastructure needs.
- Evaluate the transportation funding implications related to e-commerce (e.g., package delivery fees, Goods Delivery Fee proposed by TROC).



6

PROJECT HIGHLIGHTS TO DATE

- MPO/RPO Online Survey
- E-Commerce Expert Panel (8/7/2024)
- Facilitated discussion with Colorado state representatives for package delivery fee challenges and opportunities (10/16/2024)
- Case Study Framework
- Discussion



7

MPO/RPO Online Survey

- **Nearly 100% response from MPOs and RPOs**
- **83%** of respondents indicated that they have not done any studies related to e-commerce, and no plans to do so.
- Most said that e-commerce **DOES** impact their region's transportation system (**78%**) and land use (**83%**).
- **61%** do not know if their local communities are prepared to address impacts of e-commerce.
- **65%** believe e-commerce growth will have impact on transportation infrastructure and operations in their region.



8

E-Commerce Expert Panel

- Web-based panel session, held on August 7th.
- More than 200 registrants, 150+ participants
- Panelists:
 - Maura Kennedy, Amazon (E-Commerce Retailer)
 - Kevin Hodge, ROCK Commercial Real Estate, LLC (Industrial Real Estate)
 - Richard Montanez, Philadelphia Streets Department (Municipal/Urban)
 - Sam Cressler, PSATS/Southampton Township (Municipal/Rural)
 - Chris Caba, York County Planning Commission (MPO/Regional)
- Moderated by Tom Phelan of Michael Baker International



9

E-Commerce Expert Panel: Key Themes

- E-commerce is customer-driven
- Disproportionate impacts on local transportation system – at fulfillment center locations and on urban streets
- Driving innovations in technology – warehouse operations, delivery vehicles, artificial intelligence
- Need for local land use planning to adapt
- E-commerce is labor-intensive, which has economic benefits (employment) and challenges (work force access)
- Understanding supply chains is critical



10

Urban Context: “Competition for Curb Space”



11

Colorado Retail Delivery Fee

- Imposed on deliveries made by motor vehicles with at least one item subject to the state sales or use tax.
- Collected by retailer or “marketplace facilitator.” Applies to deliveries to customers in Colorado.
- Small business exemptions (less than \$500k in sales during prior year)
- \$0.29 per delivery for current fiscal year (indexed to inflation).
- Aggregate of six different fees paid to six different state enterprises (e.g., Clean Fleet Retail Delivery Fee).
- Estimated monthly revenue collected for 2024: **\$7.8M**



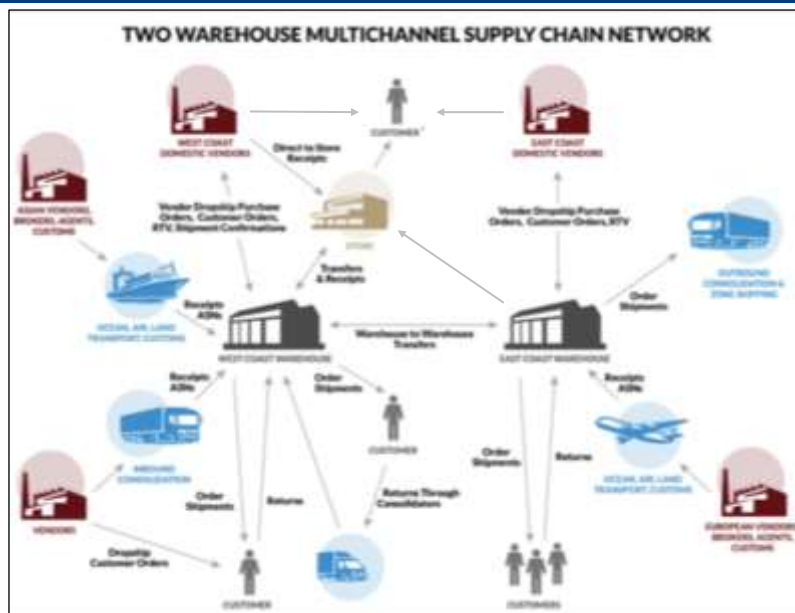
12

Case Study Framework



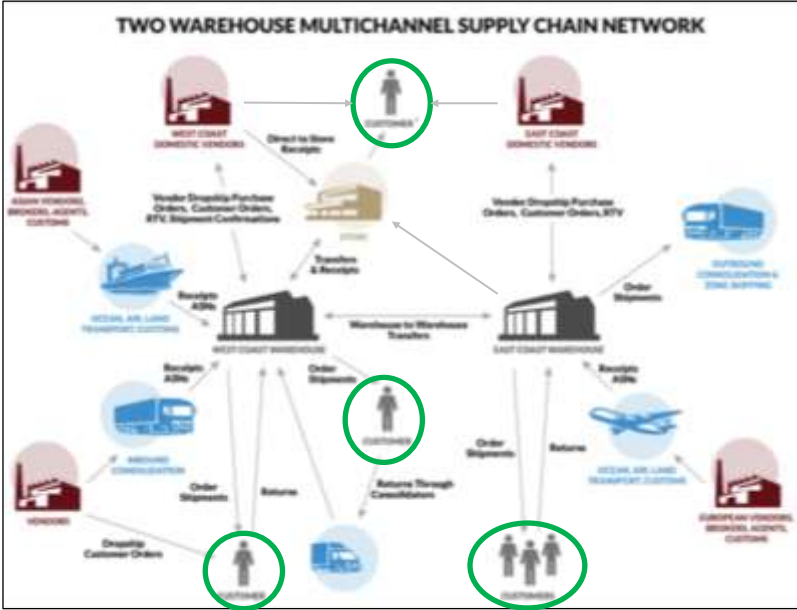
13

EXAMPLE: Multichannel E-Commerce



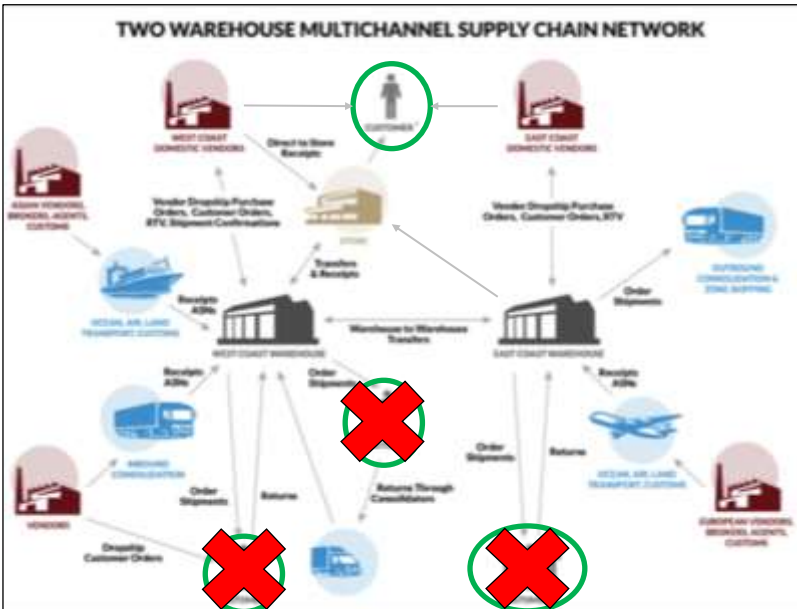
14

EXAMPLE: Multichannel E-Commerce



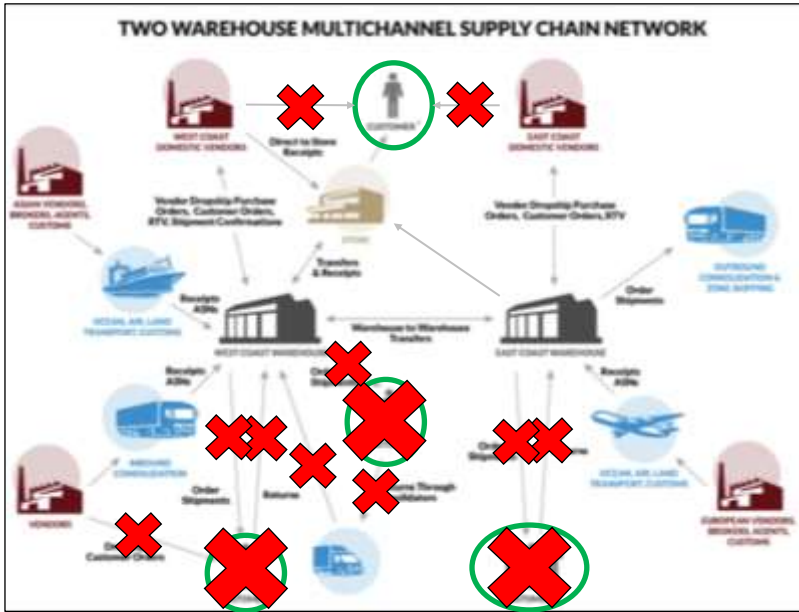
15

EXAMPLE: Simple Retail Supply Chain



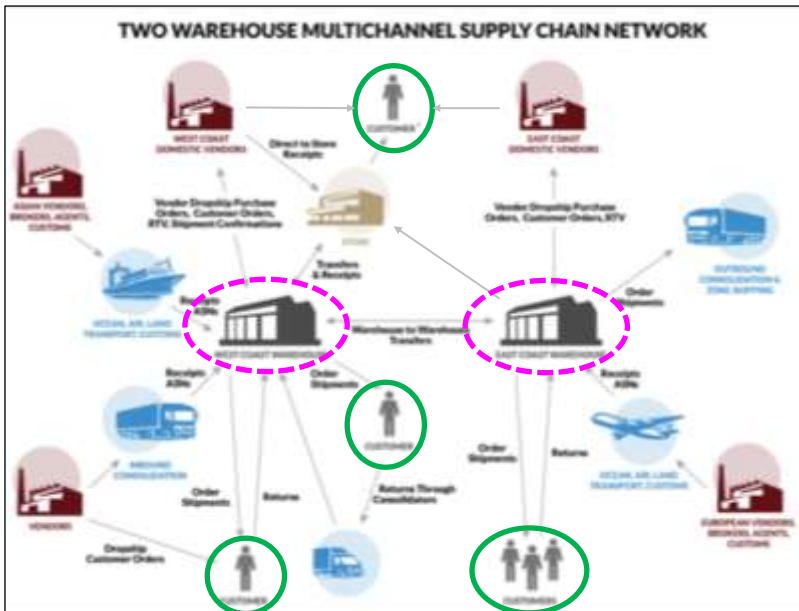
16

EXAMPLE: Simple Retail Supply Chain



17

EXAMPLE: Multichannel E-Commerce





18

Case Study Framework: Traditional DC

NFI Logistics DC in Kutztown (Lehigh Valley)

- About 980,000 square feet
- Some trailer storage on site
- Standard loading docks for conventional trailers
- Minimal parking for employees (200 spaces)
- Two-sided loading dock configuration: typical cross-dock operation





19

Case Study Framework: Fulfillment Center

Amazon Fulfillment Center in Jackson Twp (York Co.)

- Approximately 1M square feet
- Sizable trailer storage on site
- Smaller loading docks for box trucks and vans
- Substantial parking for employees (1,000+ employees during peak season)
- Three-sided loading dock configuration



20

DISCUSSION



21



Pennsylvania
Transportation Advisory Committee

E-COMMERCE STUDY Project Update

CAPITAL REGION FAC MEETING – NOVEMBER 20, 2024



22

2) Presentation - - Pennsylvania Transportation Advisory Committee: E-Commerce Study

Tom Phelan, BHX Engineering

3

3) NY State Freight Plan Update

- New York State Freight Plan approved by the Office of the Secretary of Transportation at USDOT
 - No lapse in NHFP funding
 - Available online at <https://www.dot.ny.gov/freight-plan/reports>
- Web Atlas available at <https://freightatlas.transportny.org/>



4

4) Update - Capital District Clean Communities

LIHTI | LONG ISLAND HIGH TECH INCUBATOR

AMOGY

Ammonia powered tugboat sailed on the Hudson, September 2024

****\$220M raised since 2020****

UES
LONG ISLAND ELECTRIC INDUSTRIES

[EV Conversions for Commercial Vehicles - UES](#)

Article Link: [Amogy Sails World's First Carbon-Free Ammonia Powered Maritime Vessel - Amogy](#)

Video Link: <https://youtu.be/NrahsS0YrTg>

5

Update - Capital District Clean Communities



Port Industry Day
(9/19/24)



Sprague Energy Terminal
(10/15/24)



Bus Scrappage
(11/5/24)

6

Subscribe and Become a Member

Join Our Mailing List

7

5) In Motion 2050 - Status

Completed:

- Phases 1 and 2; Phase 3 through February 2025
 - www.inmotionplan.com for products
- 2 Rounds of public input
- Vision Statement Approved September 2025

Next Steps:

- October – Draft Needs Assessment Report
- November – Scenario Planning White Paper
- Finish Regional Photo/Video Collection
- Next Task Force Meeting – November 2025



8

6) Over-dimension Routing in the Capital Region

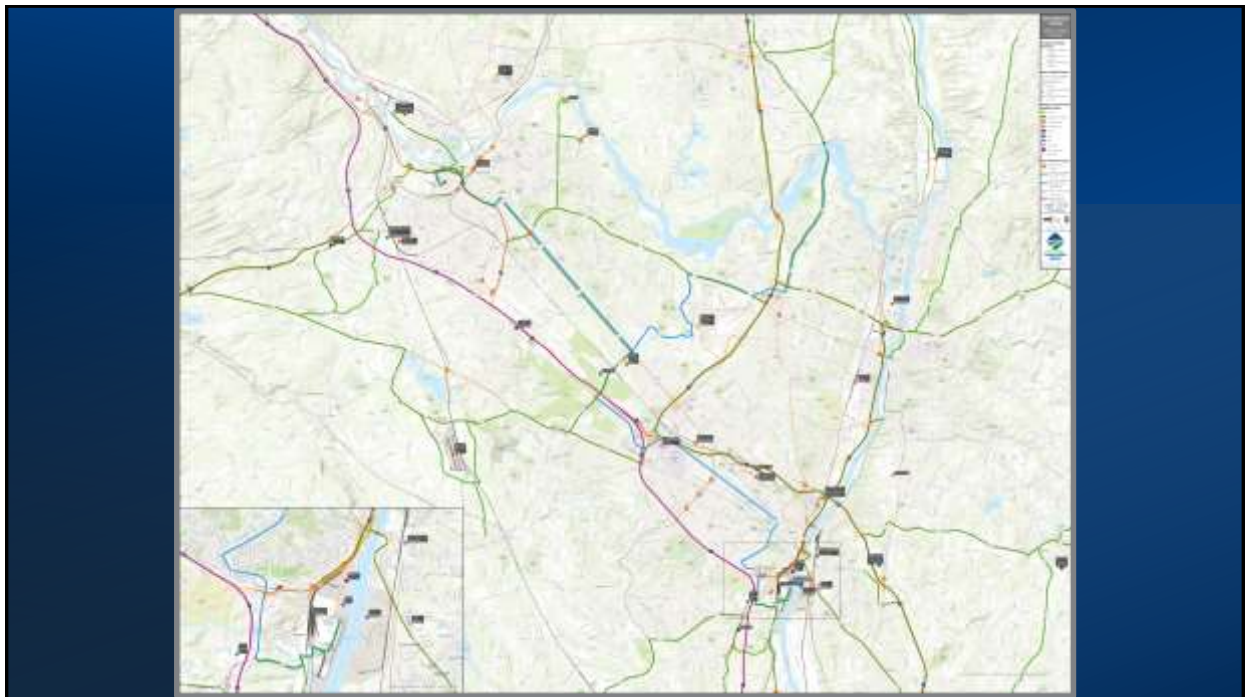
Update - Mapping

- Continue to develop mapping geodatabase and background information
 - Coordinating with stakeholders to specify issue at each location (ex: low bridge, turn radius, etc.)

Update - Planning

- Develop a potential 2025-26 UPWP planning project scope
 - 2025-26 UPWP starts April 1, 2025, and is pending Policy Board approval
- Continue to identify any short-term projects with potential OS/OW implications

9



10

7) Other Updates

- TIP Project Solicitation Now Open
 - Project proposals for the 2025-2030 Transportation Improvement Program (TIP) are due on December 6, 2024, at 5:00 PM
- Member Updates

11

8) Action Items/Next Meeting

- Action Items:
 - Consider joining the Clean Communities Mailing List
- 2025 Meeting Dates:
 - February 19, May 21, August 20, November 19
 - 9:00 AM
 - Save the Dates will be sent before the end of the calendar year

12

Freight Advisory Committee



Thank you for attending!

Sign up for E-News: <http://eepurl.com/ivx946>

Phone

(518) 458-2161

Email

info@capitalmpo.org

Mail

1 Park Place, Suite 101,
Albany, NY 12205-2676

Web

capitalmpo.org



CapitalMPO



@CapitallMPO



@CapitalMPO



Capital Region
Transportation
Council