

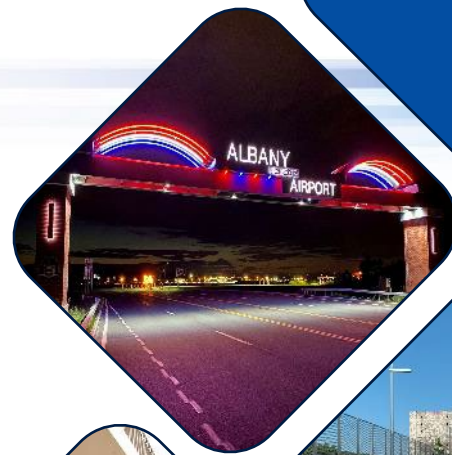
# IN MOTION

THE PLAN TO 2050

Tools of the Trade  
June 20, 2024

Sandy Misiewicz, AICP

Capital Region Transportation Council  
Executive Director



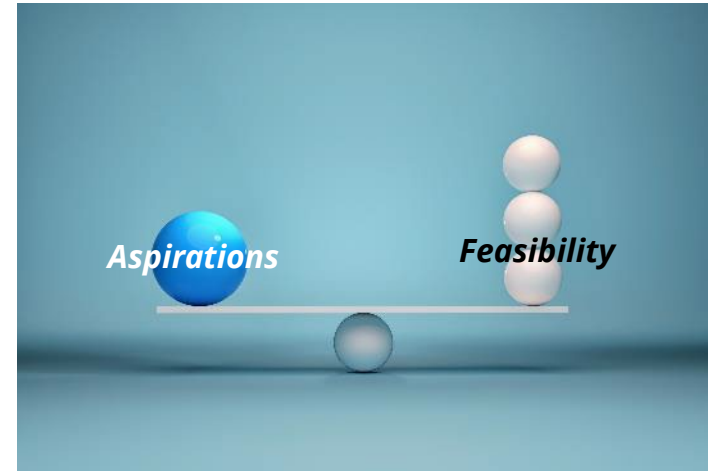
# Capital Region Transportation Council

- Metropolitan Planning Organization (MPO)
- Transportation policy-making & planning
- Allocate federal transportation funds
- Members include municipalities plus:



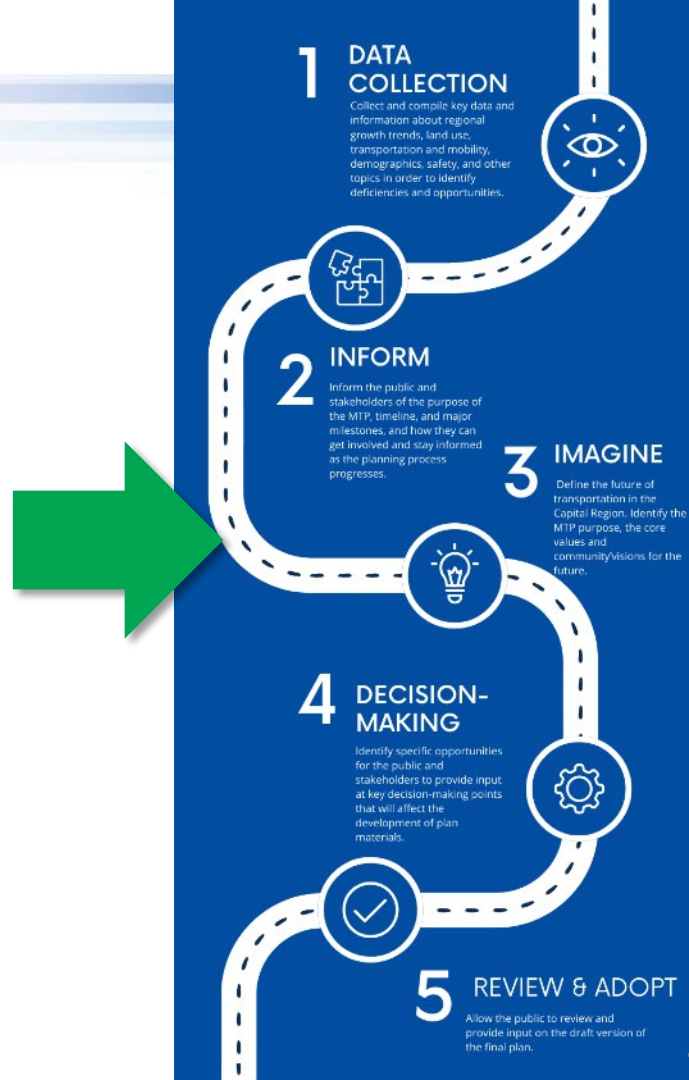
# What is the In Motion Plan?

- Metropolitan Transportation Plan
- Shared vision for the future developed collaboratively with the public, governments, and interested parties
- Examines the region's future investment options



# In Motion Plan Process

- 5 Phases – adoption expected September 2025
- Opportunities for the public to be involved in all phases
- Plan will lay out the policies and strategies the Transportation Council will use to prioritize federal transportation investments.



# Completed to Date

- Phase I Products:
  - ✓ Congestion Management Plan
  - ✓ Coordinated Plan
  - ✓ Regional Trends StoryMap
  - ✓ Regional Trends and Conditions Report
  - ✓ MTP Public Involvement Plan

The screenshot shows the cover of the report 'In Motion: Capital Region Trends & Forecasts' dated December 2023, published by the Capital District Regional Planning Commission and the Capital Region Transportation Council. The cover features a photograph of the New York State Capitol building. Below the cover, a navigation menu includes 'Why Now?', 'Our Region', 'People & Places', 'Economy', 'Land Use & Development', 'Mobility & Travel Patterns', 'A Changing Climate', and 'What's Next'. The main content area displays a text block about population trends for the 60+ age group and a map titled '2010-2020 Change in 60 Plus Population'. The map uses a color scale from dark blue (> 45%) to light yellow (< 15%) to show population change percentages across various municipalities. A legend for the map shows a color gradient from dark blue to light yellow with markers for > 45, 30.3, and < 15. A tip at the bottom suggests zooming in for more detail.

**In Motion: Capital Region Trends & Forecasts**  
December 2023  
By the Capital District Regional Planning Commission & The Capital Region Transportation Council

Why Now? Our Region People & Places Economy Land Use & Development Mobility & Travel Patterns A Changing Climate What's Next

The population aged 60 and over is expected to increase to 22% of the overall regional population by 2040. The age groups of 0 to 24 years and 25 to 64 years will decrease to 29% and 49%, respectively. As the population grows, the number of people with a disability is also likely to grow. It is important that the region monitor where the 60+ population is located to help older people and their families plan strategies to reduce transportation barriers and maintain daily activity.

**2010-2020 Change in 60 Plus Population**

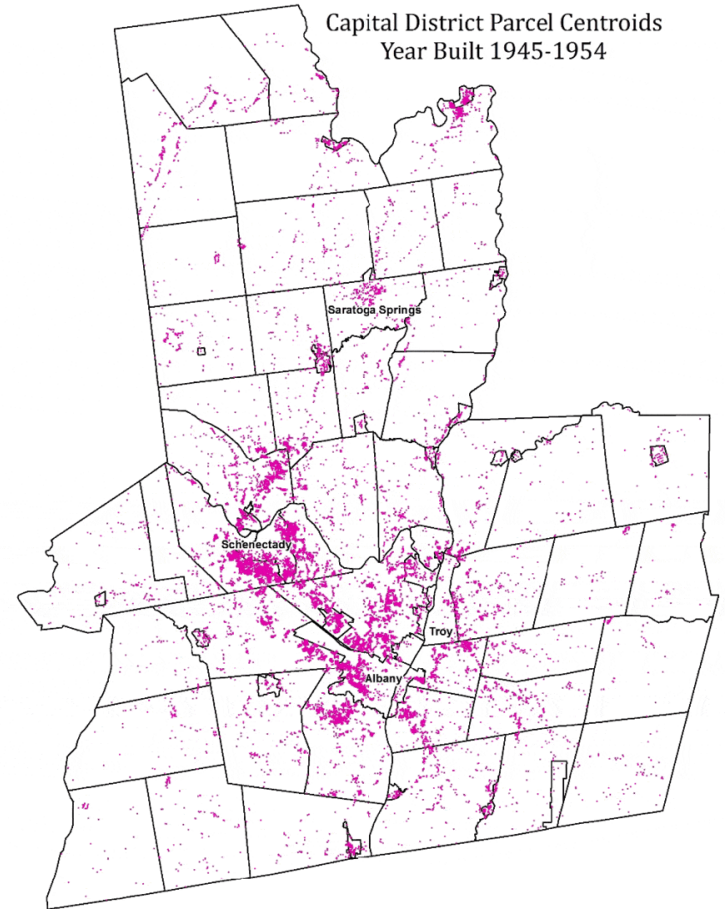
2010-2020 Change in 60 Plus Population

> 45  
30.3  
< 15

*Tip: Zoom in for a better look at population change. Click on a municipality to learn more!*

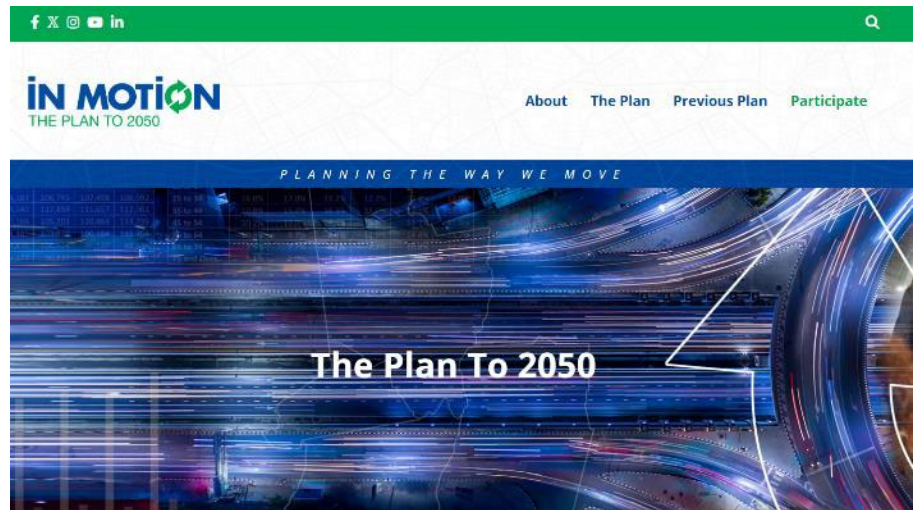
# Key Trends

- Slow population growth
- Growing housing affordability concerns
- An aging population
- Increase in traffic crashes
- Inequality of opportunity
- Aging infrastructure
- Disconnected development
- More transportation options
- Significant shifts to work-from-home



# Completed to Date

- Phase II Products:
  - ✓ Plan name, brand, & logo
  - ✓ Project Website
  - ✓ MTP Issues and Priorities Survey
  - ✓ Draft MTP Goals and Objectives
- [www.inmotionplan.org](http://www.inmotionplan.org)



# Public Outreach

- Phase I Outreach & Engagement
  - ✓ CMP Survey summary
  - ✓ Coordinated Plan survey summary
  - ✓ CDTA's TDP Survey summary
- Phase II Outreach & Engagement
  - ✓ Online Survey
  - ✓ Inform & Imagine Virtual Workshop
  - ✓ Local Library outreach
  - ✓ Transit pop-ups
  - ✓ Tabling/events



## The Latest

What is currently being developed

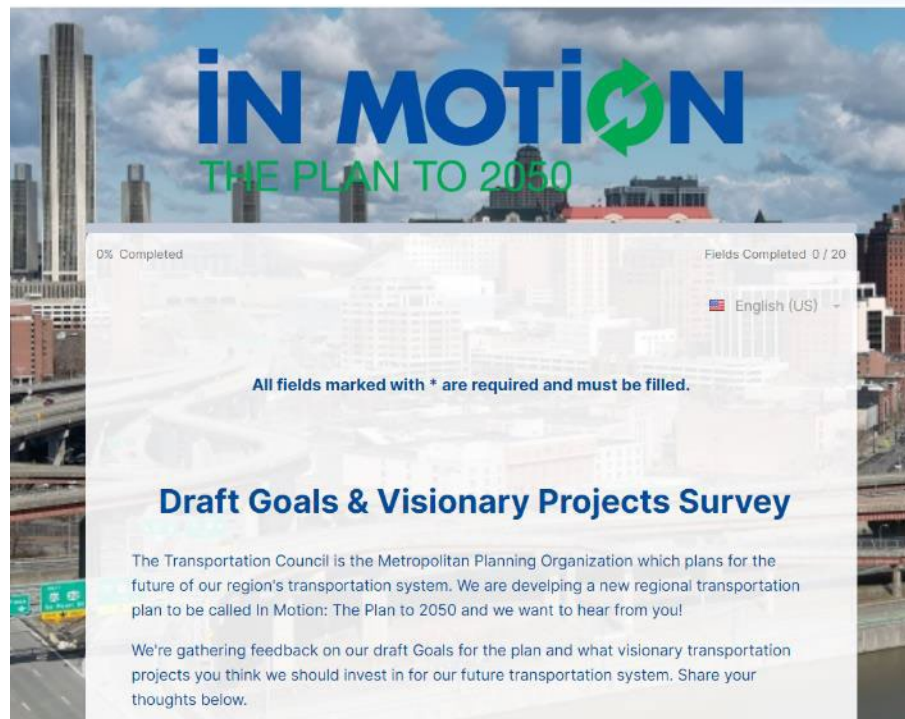
### Draft In Motion Plan Goals and Objectives

- ♦ **Goal 1: Safety** – Eliminate fatalities and serious injuries on Capital Region roadways and increase the security of the transportation system.
- ♦ **Goal 2: Mobility** – Ensure the transportation system is maintained, operated, and coordinated to support reliable travel throughout the region.
- ♦ **Goal 3: Access** – Improve transportation choices and access to key destinations for people and goods.
- ♦ **Goal 4: Equity** – Achieve an inclusive transportation planning process and make investments that address historic and contemporary transportation-related inequities experienced by disadvantaged populations such as racial and ethnic minorities, low-income people, seniors, and disabled people.
- ♦ **Goal 5: Livability** – Make strategic investments in the transportation system to support economic development, population growth, and housing in areas with transportation options.
- ♦ **Goal 6: Climate** – Reduce the risks the region faces from climate change, improve air quality, and reduce emissions from transportation.
- ♦ **Goal 7: Resilience** – Prepare for and protect the transportation system from changing conditions and natural hazards to responsibly manage the transportation system for generations to come.

Read the **Objectives** that define the above Goals, and let us know what you think via this survey or email at [info@capitalmpo.org](mailto:info@capitalmpo.org).

# We want to hear from you!

- Tabling and events
- Promote public engagement opportunities via social media, newsletters, etc.
  - Online survey
  - Go-at-your-own-pace virtual workshop
- Invite us to present at your next meeting!



# Thank you!

Email comments or questions to:

**Sandy Misiewicz, Executive Director**

[smisiewicz@capitalmpo.org](mailto:smisiewicz@capitalmpo.org)

(518) 458-2161

Visit [www.inmotionplan.org](http://www.inmotionplan.org)

